

:

)

.... (

350

:

= 350 -

CardCount

: DBGrid DataSource Table

DBGrid

Trips

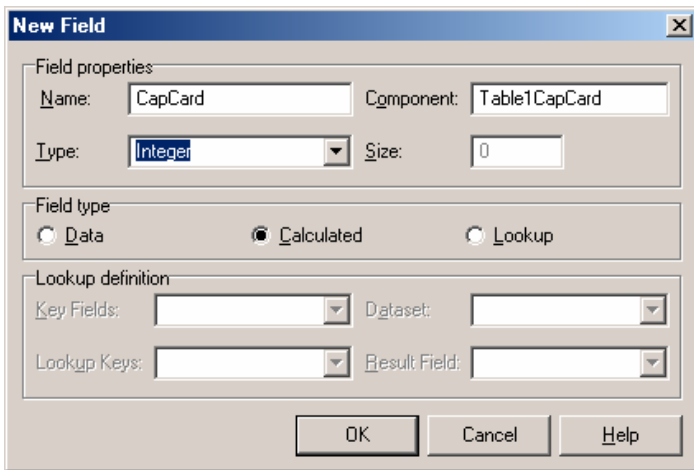
...

. False

Table1

Active

Table



New field

Type

Name

CapCard

Field type

Calculated

Integer

. Ok

Event

Table1

:

OnClacFields

Table1CapCard.Value := 350 - table1Cardcount.value ;

CapCard

Table1

True

Active

... CapCard

CardCount

)

: 2

(" "

15/9/2003

False

Table1

Active

GoTime

OK

String

Type

TheDay

Name

:

OnClacFields

Case DayOfWeek (Table1GoTime.AsDateTime) of

1: Table1TheDay.Value := ' ' ;

ملاحظة :

. Table

```

2: Table1TheDay.Value := '  ';
3: Table1TheDay.Value := '  ';
4: Table1TheDay.Value := '  ';
5: Table1TheDay.Value := '  ';
6: Table1TheDay.Value := '  ';
7: Table1TheDay.Value := '  ';
end;

```

..... DayOfWeek
..... GoTime

SQL (Structured Query Language)

GoTime

SQL :

: SQL
: Select

```

Select FieldName1 , FieldName2 , FieldName3....
From TableName1,TableName2 ...
[ Where Condition ]
[ Group By FieldName1,...]
[ Order By FieldName ]

```

[]

From Select

```

Select PName , Nationality
From Passengers

```

BDE

Query

SQL

TableName

Table

SQL

SQL

SQL

:

DBNavigator DBGrid DataSource Query

SQL ... Travel Query1 DataBaseName

```

Select PName , Nationality
From Passengers

```

) True Active

(

DBNavigator1 DBGrid1 Query1 DataSource1 DataSet
. DataSource1

DBGrid Select

DBNavigator1

Select DBGrid1

Query

SQL

True

RequestLive

. Table Query

Select * : 2

: SQL)

Select *

From Passengers

False

Query

Active

SQL

Select Where : Where

. 5 : 3

: SQL

Select *

From Passengers

Where PNo > 5

: 3 : 4

Select *

From Passengers

Where PNo = 3

: 5 2 : 5

Select *

From Passengers

Where PNo Between 2 and 5 ;

: 5 - 2 : 6

Select *

From Passengers

Where PNo Not Between 2 and 5 ;

: : 7

Select *

<http://www.alshater.net>

From Passengers

Where PName = ' ' :

8

Select *

From Passengers

Where Pname Like ' %' :

9

Select *

From Passengers

Where Pname Like '____' :

Like %

Like -

: Order By

Order by

5

:10

Select * From Passengers

Where PNo > 5

Order By PName

5

:10

Select * From Passengers

Where PNo > 5

Order By PName desc

5

: 11

. ()

Select * From Passengers

Where PNo > 5

Order By PName ,Nationality

: SQL

: Select

: Count

1

:12

Select Count(*)

From Trips

Where GoFrom = ' ' :

Count(*)

Select

Select Count(*) as Total

: **Sum** 2

: SQL

: 13

Select Sum(CardCount)
From Trips
Where GoFrom = ' ' .

: **Avg** 3

: 14

Select Avg(CardCount)
Form Trips

: **Max** 4

: 15

CardCount

Select Max(CardCount)
From Trips

: **Min** 5

: **Group By**

Select

:

:

: 16

Select GoFrom ,Count(GoFrom)
From Trips
Group by GoFrom

:

: 17

Select GoFrom ,Sum(CardCount)
From Trips
Group by GoFrom

Group By

Select

:

: **Having**

Group By

Having

. 10

: 18

Select GoFrom ,Sum(CardCount)
From Trips
Group by GoFrom
Having Sum(CardCount) > 10

Null

: 19

Select GoFrom ,Sum(CardCount)

<http://www.alshater.net>

From Trips

Group by GoFrom

Having Sum(CardCount) is not null