

```

Where
    . Table
    : PassAndTrips Passengers :1
SELECT Pname, TripNo, SeatNo, ClassNo
FROM PassAndtrips, Passengers
WHERE PassAndtrips.PNo = Passengers.PNo

```

```

" "
)
Passengers.PNo
: Trips Passengers PassAndTrips : 2
:
SELECT Pname, Company, GoFrom, SeatNo, ClassNo
FROM Passandtrips, Passengers, Trips
WHERE (PassAndtrips.PNo = Passengers.PNo)
AND (PassAndtrips.TripNo = Trips.TripNo)

```

: Inner join

```

: SQL
SELECT Pname, TripNo, SeatNo, ClassNo
FROM PassAndtrips
INNER JOIN Passengers
ON (Passengers.PNo = PassAndtrips.PNo)

```

: SQL

```

SELECT Pname, company, SeatNo, ClassNo
FROM Passandtrips
INNER JOIN Passengers
ON (Passengers.PNo = Passandtrips.PNo)
INNER JOIN Trips
ON (Trips.TripNo = Passandtrips.TripNo)

```

:

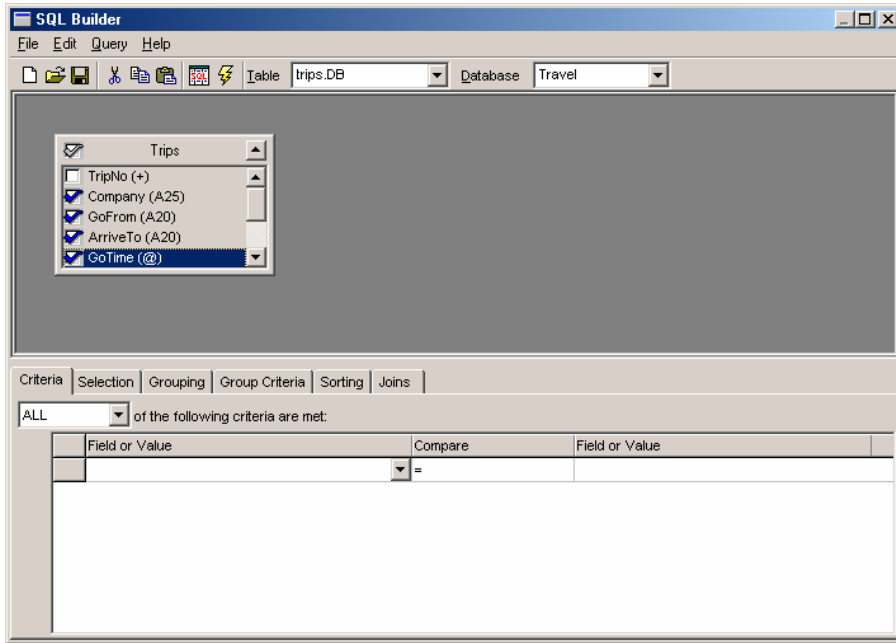
SQL Right Join Left Join Outer Join 1

: SQL SELECT 1

	Create Table

	Insert
	Update
	Delete From

.... SQL



: SQL Builder

SQL

SQL

...

SQL Builder

Query

SQL Builder

:

: 1

Travel

Database

1

Trips.db

Table

2

. (

)



Execute SQL

3

SQL

SQL Builder

4

..

Query

SQL

: SQL Builder

Where

: 2

:

... SQL Builder 1

) Trips.db 2

. (

= Field Value Trips.Gofrom : () Criteria 3

. () Field Value Compare

... SQL 4

. : 3

Compare = Trips.ArriveTo 1

. ()

Selection SQL Builder :

) (Field) Trip

) () (Output Name

(Query DBGrid

. SQL

:

SQL Builder Order By

Sorting

(Sorted by) Add

Sorted By ()

.... Z →A A→Z

:Group by ...Having

. Group Criteria Grouping Having Group by

: SQL Builder

:

(Query) SQL Builder

Passenegers Table PassAndTrips Travel

:

Passengers PNo

PassAndTrips PNo

) PNo

. (SQL

```

Trips Table Trips :
... TripNo
:
( )
,
Where GoFrom = '
...
ParamName Where GoFrom = :ParamName
. Query
:
DBGrid DataSource Query
Button Edit
Query1 SQL ...
SELECT Company, TripNo, GoFrom, ArriveTo, GoTime, ArriveTime, CardCount
FROM Trips
Where GoFrom =:CityName
) Query1 CityName
. ( Button1
Edit Query1.Params ... Query1 Params
Data Type CityName
. ftString
: Button1
query1.Close;
query1.ParamByName('cityName').Value := edit1.Text;
query1.Open
( ... ) Edit1
: 2
:
SELECT Company, TripNo, GoFrom, ArriveTo, GoTime, ArriveTime, CardCount
FROM Trips

```

http://www.alshater.net

Where TripNo =: TripNumber ;

. ftInteger DataType TripNumber Edit Query1.Params

:

query1.Close;

query1.ParamByName('TripNumber').Value := strtoint (edit1.Text) ;

query1.Open ;

:

SQL

Parameter

SQL Builder

SQL Builder

: Query

Locate) Query

Table

FindKey

Query

(.... First Eof Bof Lookup

..

Query

FindNearest

:

: **Employees**

Company

Salary	Hiredate	Department_id	ManagerNo	EmpName	EmpNo
9000	10/1/2002	3	200	Sara	10
12500	06/08/2000	2	300	kala	16
11000	09/01/2001	3	100	Dani	20
14000	05/07/2000	2	100	Wleed	30

:

Database Desktop

:



DataSource	DataSource	DBNavigator	DBGrid	Query
	:	SQL		Query
QryEmpNo	Query1	Name	:	1
			:	SQL
Select * from employees Where EmpNo = : No				
QryEmpName	Query2	Name	:	2
			:	SQL
Select * from employees Where EmpName =:name				
Query3	Name	() :	3
				... QrySal
Select * from Employees Where salary between :mn and :mx				
QryHireDate	Query4	Name	:	4
Select * from Employees Where hiredate between :b and :e				
Query5	Name	:		5
				QrysumsalaryByDepartment
Select Department_id ,sum(salary) form employees				
Group by DepartMent_id				

Query6 Name :

6

QryManager:

Select Empname From employees Where managerNo = :mno

:

() 1

QryEmpNo.Close;

DataSource1.DataSet := QryEmpNo ;

QryEmpNo.ParamByName ('No') .value := Strtoint (Edit1.text) ;

QryEmpNo.Open;

: () 2

QryEmpName.Close ;

DataSource1.DataSat := QryEmpName ;

QryEmpName.ParamsByName ('Name').Value := Edit2.text ;

QryEmpName.Open ;

() 3

QrySal.Close ;

DataSource1.DataSat := QrySal ;

QrySal.ParamByName(' mn') .Value := strtoint (edit3.text) ;

QrySal.ParamByName(' mx') .Value := strtoint (edit4.text) ;

QrySal.Open ;

: () 4

QryHireDate.Close ;

DataSource1.DataSat := QryHireDate;

QryHireDate.ParamByName ('b').asdate := datettimepicker1.date;

QryHireDate.ParamByName ('e').asdate := datettimepicker2.date;

QryHireDate.Open ;

: () 5

QrysumsalaryByDepartment.Close ;

DataSource1.DataSat := QrysumsalaryByDepartment;

QrysumsalaryByDepartment.Open ;

: () 6

QryManager.Close ;

DataSource1.DataSat := QryManager;

QryManager.ParamByName ('mno').Value := strtoint (Edit5.text) ;

QryManager.Open ;

While not QryManager.eof Do

Begin

Showmessage (QryManager.fieldByName ('EmpName').Value) ;

QryManager.Next ;

End;

Ok